



REMANSO

luxury aluminium pergolas

Create the ultimate outdoor living space



Create the ultimate outdoor living space...

Remanso Luxury Pergolas create a beautiful outdoor living space in any garden. The all-weather roof design allows you to make the most of the outdoors all year round.

For the ultimate in convenience, the fully automatic roof system provides sky views or shelter at the touch of a button.

Remanso will transform your garden into an oasis of relaxation and a luxury space for entertaining family and friends.

Why choose a Remanso?

Remanso Luxury Pergolas are constructed from heavy duty powder coated aluminium with a fully automatic opening and closing louvre-style roof.

All models include LED roof lighting as standard. Optional accessories include automatic blinds with remote control, vented side panels, glass sliding doors, 1.8kW infrared heater and bioclimatic rain sensor.

Available in 5 sizes, all 2.5m high. The perfect choice for a hot tub, outdoor kitchen, or a seating area.



Alfresco Dining



Outdoor Kitchen



Hot Tub



Standard Features



Motorised Roof Louvres

The motorised louvres can rotate from their fully closed position through 145° (and be paused at any increment in-between) thus tracking the path of the sun creating your desired level of shading.



Aluminium Frame

All Remanso Pergolas are built from heavy duty powder coated aluminium in a stunning Anthracite colour, to create a strong, hard wearing and reliable structure that will last for years to come.



Multi-Functional Controller

Every Remanso comes with an easy-to-use remote control that operates the roof louvres and LED lighting.



Integrated LED Lighting

Integrated 360° degree LED lighting within the roof profile surrounds the Remanso to create a perfect outdoor setting day or night.



Integral Rainwater System

The integral rainwater system is designed to capture water in a concealed drainage channel built discreetly in the roof frame. Any water then exits via the base of the legs.

Optional Features



Automatic Blinds

The optional automatic blinds are operated by a simple remote control. Available in a range of sizes to suit your needs they provide additional shade, shelter and privacy.



Vented Side Panels

The Remanso vented side panels with static louvres are designed to add privacy and shade. Unlike the roof panel the louvres are fixed in an optimum angled position.



Glass Sliding Doors

These superb glass sliding doors are seamlessly integrated using a low-profile track system for effortless operation. A great way to add an extra dimension to your garden room.



1.8kW Outdoor Heater

The Remanso heater can be easily mounted to the frame allowing you to spend time in your garden on those cooler evenings, keeping you and your guests nice and warm.



Bioclimatic Rain Sensor

When rain is detected, the intelligent system promptly closes the pergola's louvers, ensuring you stay dry and cosy. No more sudden weather surprises disrupting your relaxation.



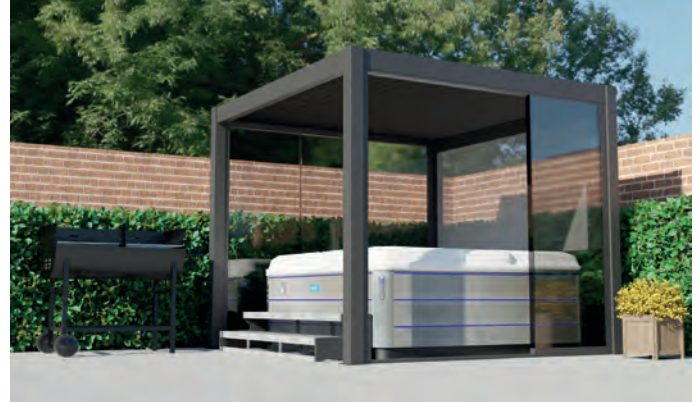


Free-standing Models



2.5m x 2.5m

Our smallest model is ideal for more intimate spaces.



3m x 3m

A compact design that offers the perfect solution for enclosing a hot tub.



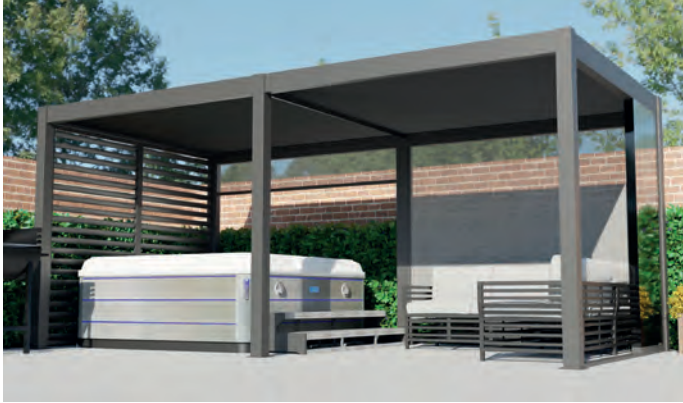
3m x 4m

Our most popular model provides the ideal space for dining and entertaining the family.

Remanso Pergolas offer a wide selection with its five sizes and seven models to choose from, each embracing a distinctive array of accessories. From the elegant charm of automatic blinds that harmonise sunlight and shade, to the modern allure of glass sliding doors that seamlessly connect indoor and outdoor spaces.

Whether you opt for the intimate cosiness of the 2.5m model or the grandeur 4m x 5m model, the possibilities for transformation are boundless.

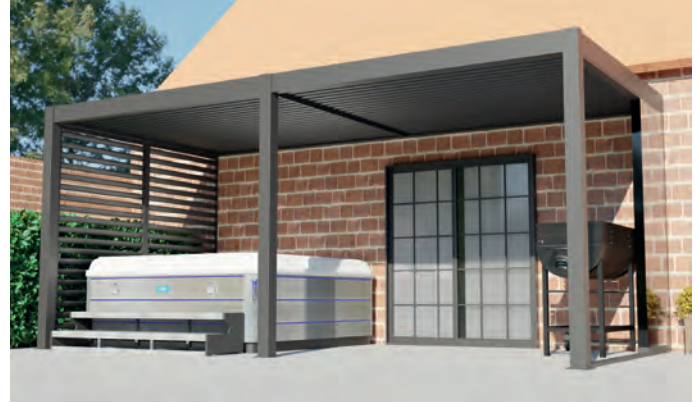
Free-standing Models



3m x 6m

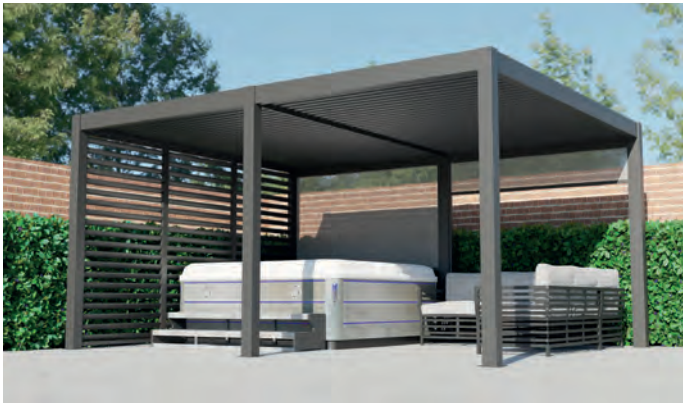
With this larger model you can create a multi-use outdoor space in your garden.

Wall-mounted Models



3m x 6m - Wall-mounted

This larger model you can create a multi-use outdoor space in your garden, with the plus side of it being wall mounted



4m x 5m

Our largest model offers plenty of space for all the family to enjoy the outdoors, whatever the weather.



4m x 5m - Wall-mounted

The same as our largest model, with the advantage of being wall mounted offering plenty of space.

Remanso Pergolas must be installed by an authorised dealer and is not designed for customer self-build. It is essential that the patio area/base is 100% level.

Product features & specifications are subject to change without notice.



Optional Accessories

Elevate your outdoor living experience with Remanso Luxury Pergolas and our exquisite range of accessories. Our commitment to crafting the perfect oasis for your garden extends beyond the pergola itself. We understand that it's the finer details that truly transform your outdoor space into a sanctuary of comfort and style.

Explore our wide selection of accessories designed to enhance your Remanso pergola:

- Automatic Blinds
- Vented Side Panels
- Glass Sliding Doors
- 1.8kW Outdoor Heater
- Bioclimatic Rain Sensor

Remanso Luxury Pergola Accessories are meticulously designed to harmonise with your pergola, providing a blend of luxury, comfort, and convenience. Create your personal garden oasis where every moment spent is a delightful retreat.



Automatic Blinds

The Remanso blinds will add privacy and shade to create the perfect garden retreat. These deluxe automatic blinds are operated by a simple remote control. A single remote can operate up to 6 blinds. Each blind can quickly be set in its desired position.

The fabric is made from a tough PVC coated all-weather material which is easy to clean. They require minimal maintenance and will withstand the elements for many years of outdoor use.

The fixed cassette adds an element of weatherproofing to the Pergola, allowing you to enjoy your outdoor space with the added protection from the wind and rain due to the side of the screens being locked into the frame.

Available Sizes:

2.5m Wide

3m Wide

4m Wide



Vented Side Panels

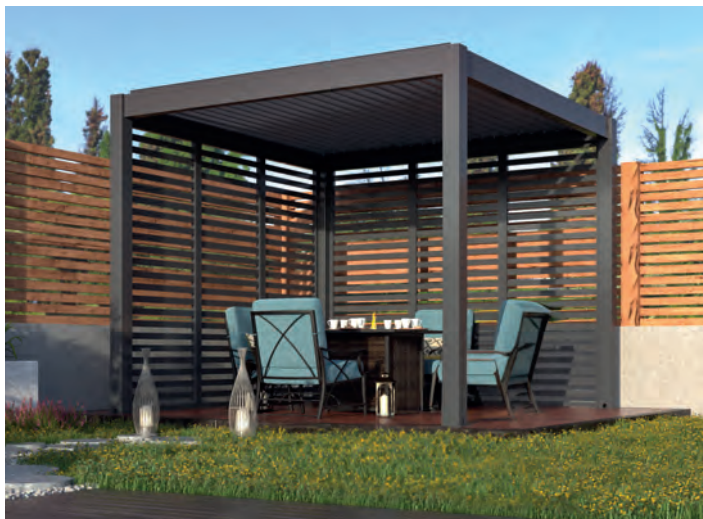
These beautiful static panels are a striking addition to any Remanso Pergola. These are fixed between each set of legs and do not rotate like the roof louvres, but still provide privacy, shade and style to your Remanso Luxury Pergola.

Constructed from toughed aluminium and powder coated to match the rest of the pergola. Each panel contains louvres which are fixed in the optimal position to allow light in, while providing subtle shade to your outdoor space.

The Remanso side panels look stunning and will take your Pergola to the next level.

Available Sizes:

1.3m Wide (2 Panels Per 3m) 1.2m Wide (3 Panels Per 4m)



Glass Sliding Doors

Remanso glass sliding doors are available in two sizes, perfectly fitting a 3m or 4m open side of your pergola. Designed with a modern aesthetic in mind, our frameless glass doors are made of high-quality 10mm thick toughened glass. This ensures durability and a sleek, sophisticated look for your pergola. The doors are lockable, allowing you to secure your outdoor space and providing an extra level of safety and peace of mind.

The Remanso sliding doors are seamlessly integrated into a matching aluminium powder-coated track. This not only enhances the overall appearance of your pergola but also ensures smooth and effortless operation. You can easily open and close the doors, allowing you to enjoy unobstructed views of your garden.

Available Sizes:

3m Wide 4m Wide



Vented Side Panels

These beautiful static panels are a striking addition to any Remanso Pergola. These are fixed between each set of legs and do not rotate like the roof louvres, but still provide privacy, shade and style to your Remanso Luxury Pergola.

Constructed from toughed aluminium and powder coated to match the rest of the pergola. Each panel contains louvres which are fixed in the optimal position to allow light in, while providing subtle shade to your outdoor space.

The Remanso side panels look stunning and will take your Pergola to the next level.

Available Sizes:

1.3m Wide (2 Panels Per 3m) 1.2m Wide (3 Panels Per 4m)



Glass Sliding Doors

Remanso glass sliding doors are available in two sizes, perfectly fitting a 3m or 4m open side of your pergola. Designed with a modern aesthetic in mind, our frameless glass doors are made of high-quality 10mm thick toughened glass. This ensures durability and a sleek, sophisticated look for your pergola. The doors are lockable, allowing you to secure your outdoor space and providing an extra level of safety and peace of mind.

The Remanso sliding doors are seamlessly integrated into a matching aluminium powder-coated track. This not only enhances the overall appearance of your pergola but also ensures smooth and effortless operation. You can easily open and close the doors, allowing you to enjoy unobstructed views of your garden.

Available Sizes:

3m Wide 4m Wide



Vented Side Panels

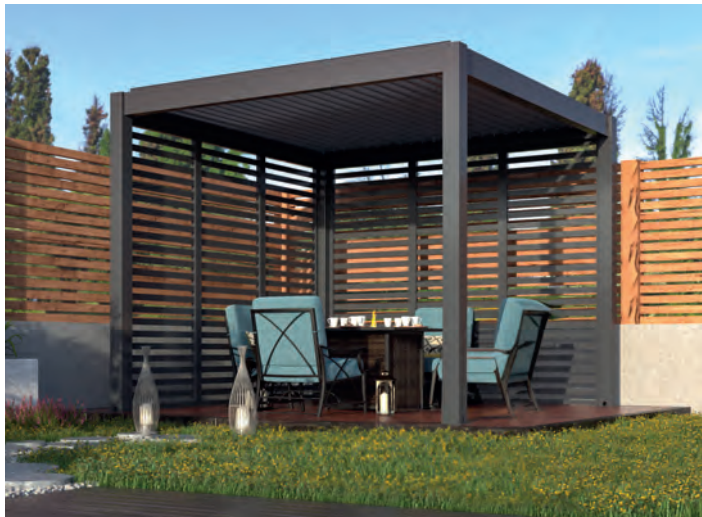
These beautiful static panels are a striking addition to any Remanso Pergola. These are fixed between each set of legs and do not rotate like the roof louvres, but still provide privacy, shade and style to your Remanso Luxury Pergola.

Constructed from toughed aluminium and powder coated to match the rest of the pergola. Each panel contains louvres which are fixed in the optimal position to allow light in, while providing subtle shade to your outdoor space.

The Remanso side panels look stunning and will take your Pergola to the next level.

Available Sizes:

1.3m Wide (2 Panels Per 3m) 1.2m Wide (3 Panels Per 4m)



Glass Sliding Doors

Remanso glass sliding doors are available in two sizes, perfectly fitting a 3m or 4m open side of your pergola. Designed with a modern aesthetic in mind, our frameless glass doors are made of high-quality 10mm thick toughened glass. This ensures durability and a sleek, sophisticated look for your pergola. The doors are lockable, allowing you to secure your outdoor space and providing an extra level of safety and peace of mind.

The Remanso sliding doors are seamlessly integrated into a matching aluminium powder-coated track. This not only enhances the overall appearance of your pergola but also ensures smooth and effortless operation. You can easily open and close the doors, allowing you to enjoy unobstructed views of your garden.

Available Sizes:

3m Wide 4m Wide



1.8kW Outdoor Heater

Perfect for spending time in your garden on those cooler evenings, the Remanso outdoor heater will keep you and your guests nice and warm.

The Remanso outdoor heater uses a high efficiency infrared carbon fibre heating element. The 1.8kW element produces totally dry heat, no condensation, no gas, no fumes and no smell.

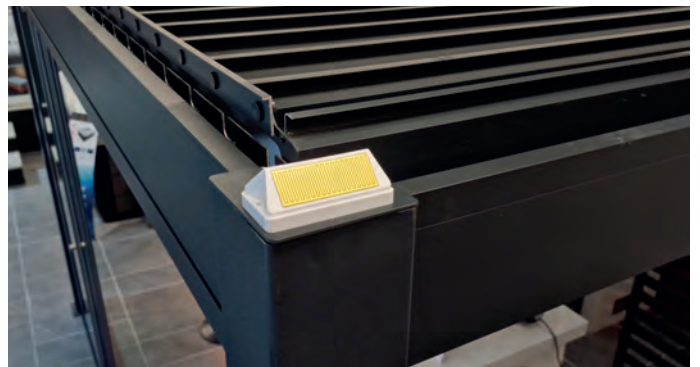
This sleek and unobtrusive heater is made from a strong aluminium casing, powder coated to match the Remanso frame. It can be easily mounted to the pergola frame and includes simple brackets that are also adjustable so you can steer the heat to any direction. It comes with a remote control as standard.



Bioclimatic Rain Sensor

Experience peace of mind with our cutting-edge Bioclimatic Rain Sensor. This intelligent accessory automatically detects changes in weather conditions and responds accordingly.

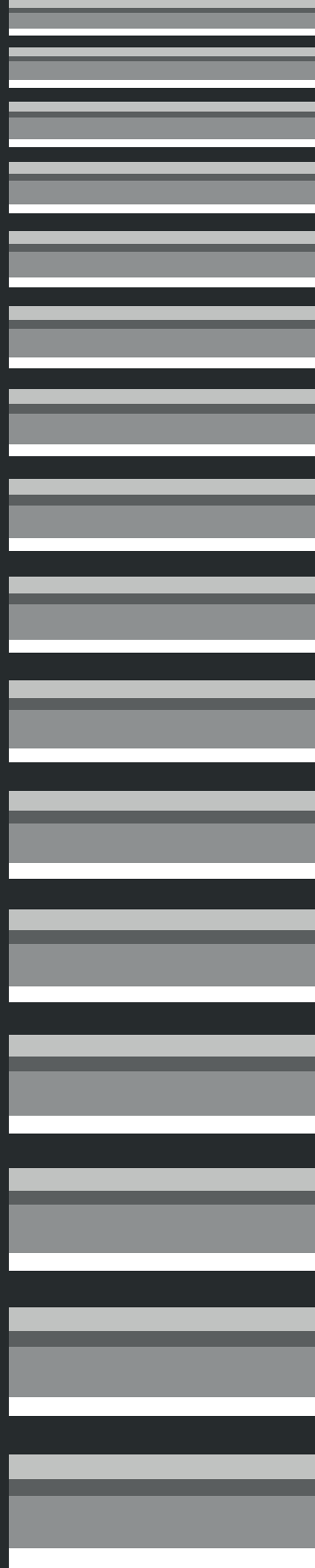
When rain is detected, the sensor triggers the pergola to close the louvres, shielding your outdoor haven from the elements. Your pergola becomes a sanctuary where you can unwind without worrying about sudden weather changes.











Vented Side Panels

These beautiful static panels are a striking addition to any Remanso Pergola. These are fixed between each set of legs and do not rotate like the roof louvres, but still provide privacy, shade and style to your Remanso Luxury Pergola.

Constructed from toughed aluminium and powder coated to match the rest of the pergola. Each panel contains louvres which are fixed in the optimal position to allow light in, while providing subtle shade to your outdoor space.

The Remanso side panels look stunning and will take your Pergola to the next level.

Available Sizes:

1.3m Wide (2 Panels Per 3m) 1.2m Wide (3 Panels Per 4m)



Glass Sliding Doors

Remanso glass sliding doors are available in two sizes, perfectly fitting a 3m or 4m open side of your pergola. Designed with a modern aesthetic in mind, our frameless glass doors are made of high-quality 10mm thick toughened glass. This ensures durability and a sleek, sophisticated look for your pergola. The doors are lockable, allowing you to secure your outdoor space and providing an extra level of safety and peace of mind.

The Remanso sliding doors are seamlessly integrated into a matching aluminium powder-coated track. This not only enhances the overall appearance of your pergola but also ensures smooth and effortless operation. You can easily open and close the doors, allowing you to enjoy unobstructed views of your garden.

Available Sizes:

3m Wide 4m Wide

